



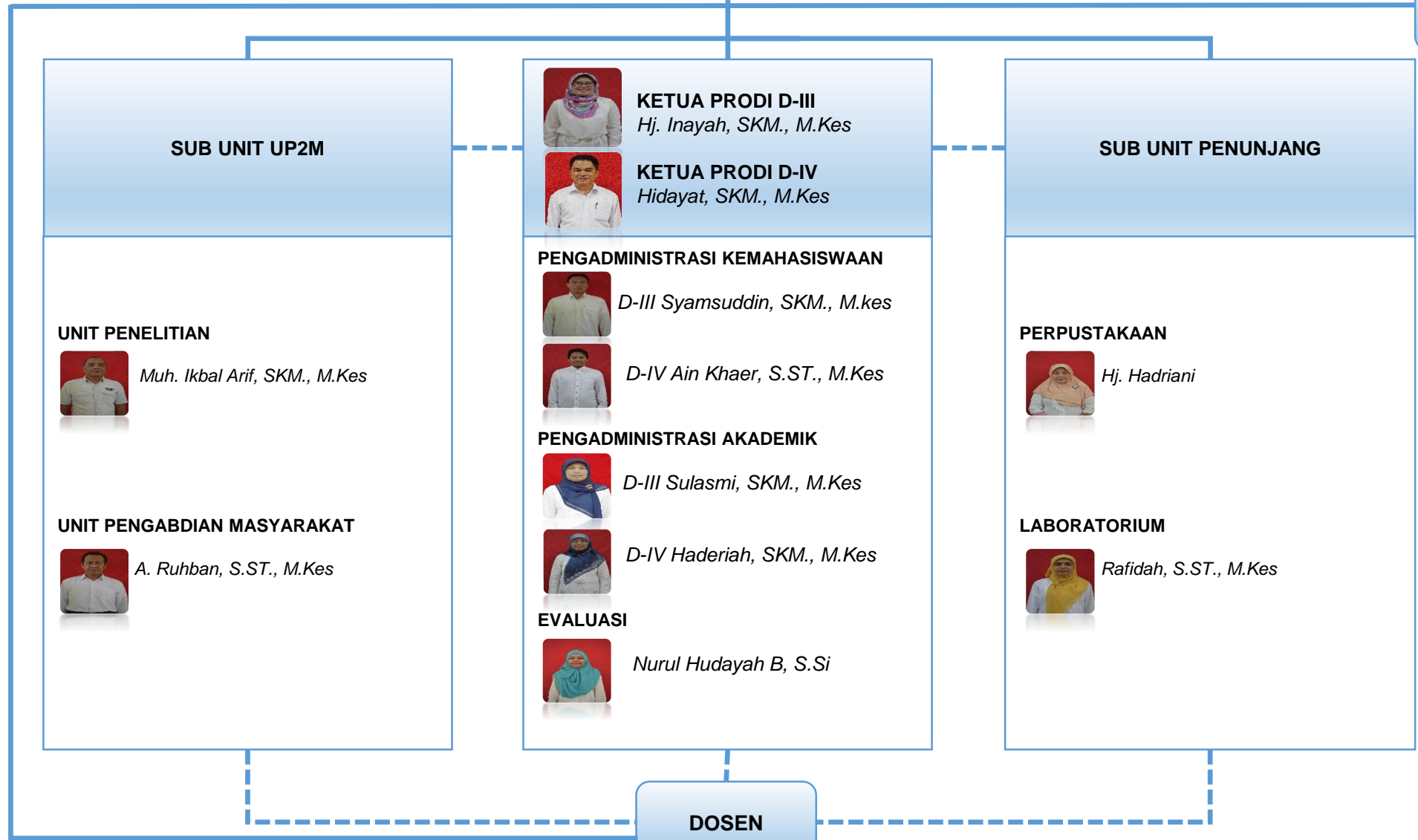
KETUA JURUSAN
Wahyuni Sahani, ST., M.Si




UNIT PENJAMINAN MUTU
Juherah, SKM., M.Kes




SEKERTARIS JURUSAN
H.Hamsir Ahmad, SKM., M.Kes



SUB UNIT UP2M



KETUA PRODI D-III
Hj. Inayah, SKM., M.Kes



KETUA PRODI D-IV
Hidayat, SKM., M.Kes

SUB UNIT PENUNJANG

UNIT PENELITIAN




Muh. Ikbal Arif, SKM., M.Kes

UNIT PENGABDIAN MASYARAKAT




A. Ruhban, S.ST., M.Kes

PENGADMINISTRASI KEMAHASISWAAN




D-III Syamsuddin, SKM., M.Kes




D-IV Ain Khaer, S.ST., M.Kes

PENGADMINISTRASI AKADEMIK




D-III Sulasmi, SKM., M.Kes



D-IV Haderiah, SKM., M.Kes

EVALUASI



Nurul Hidayah B, S.Si

PERPUSTAKAAN



Hj. Hadriani

LABORATORIUM




Rafidah, S.ST., M.Kes




PENGADMINISTRASI KEUANGAN TINUS



PENGADMINISTRASI KEPEGAWAIAN
Hasanuddin



PENGADMINISTRASI BARANG
La Taha, SKM., M.Kes



OPERATOR KOMPUTER
Johari, A.md



CARAKA TAHA

DOSEN